



# Skyhook Wireless Virtual GPS Configuration Guide

## Overview

This document will guide users through installing and configuring the Skyhook Wireless Virtual GPS application onto any Windows Mobile device.

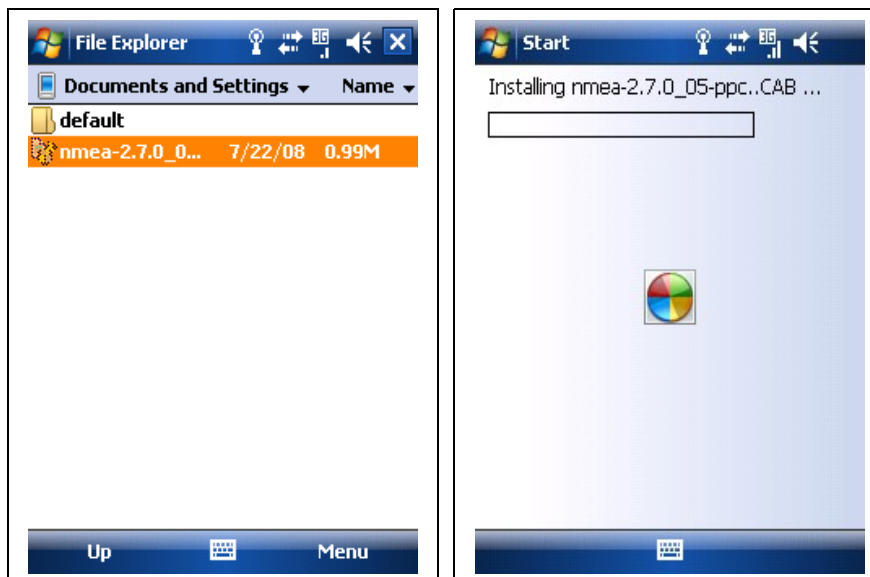
The sample device below is an AT&T HTC Tilt:



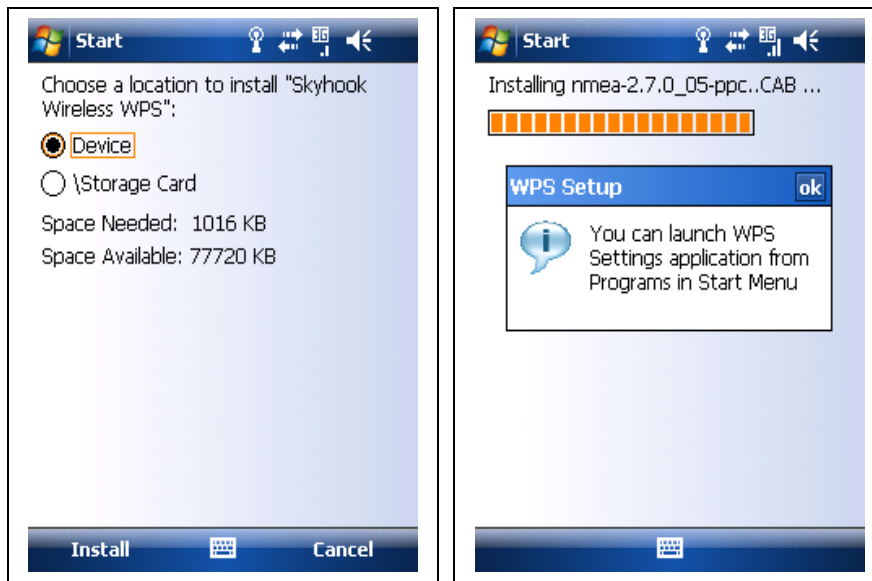
The installation and configuration process is very similar on other Windows Mobile devices, but minor differences may be seen.

## Installing Virtual GPS Application

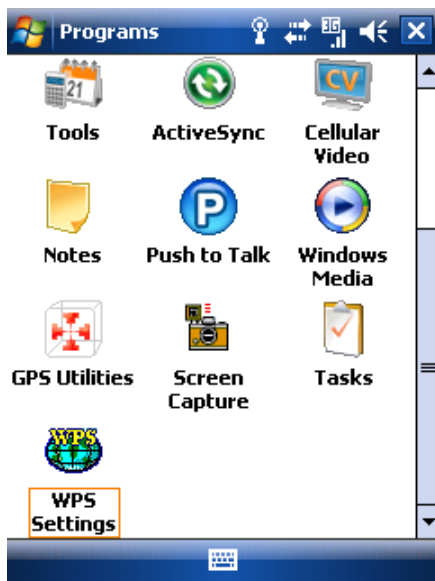
1. Download the Virtual GPS application from the Skyhook Wireless Developer's site: <http://skyhookwireless.com/developers/sdk.php>
2. Copy the installation (.cab) file to a folder on the Device or a Storage Card.
3. Start File Explorer, navigate to the file and launch the installer



- Select to install the application on the Device. The pop-up box below appears when the installation is complete.



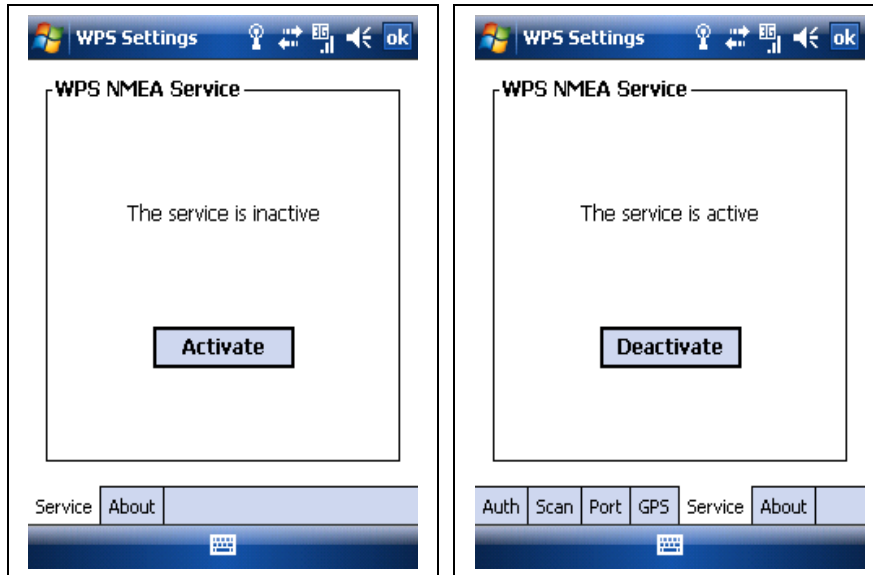
- Start the WPS Virtual GPS application from the programs list



## Configuring WPS Virtual GPS Application

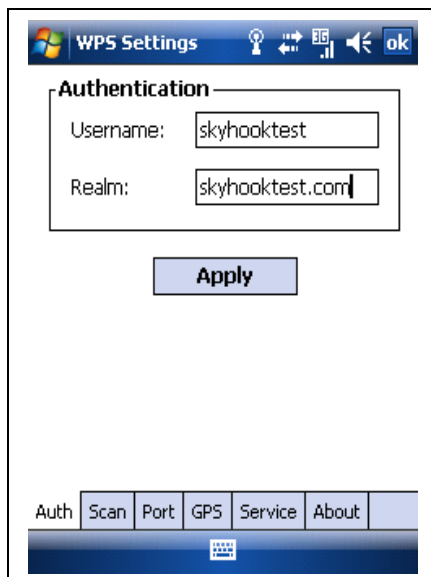
6. After the WPS application is installed, it can be either in an Inactive or Active state; if the application is Inactive, it can be activated by clicking the “Activate” button.

Once activated, several configuration tabs are visible along the bottom.



7. Auth - tab:

Use same username and realm for authentication as was used to register with the Skyhook Developer program.

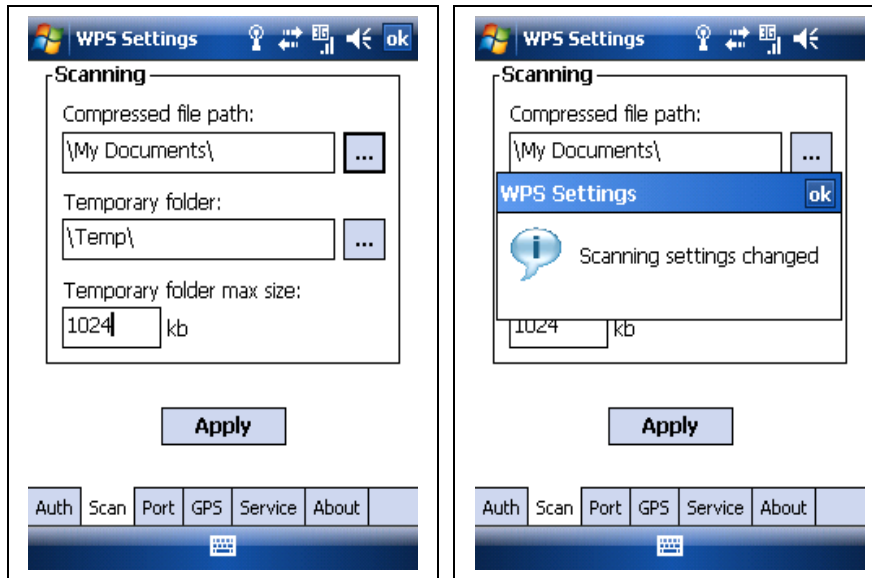


8. Scan - tab:

Compressed file path is only used if you have received a local dataset from Skyhook Wireless (agreement required).

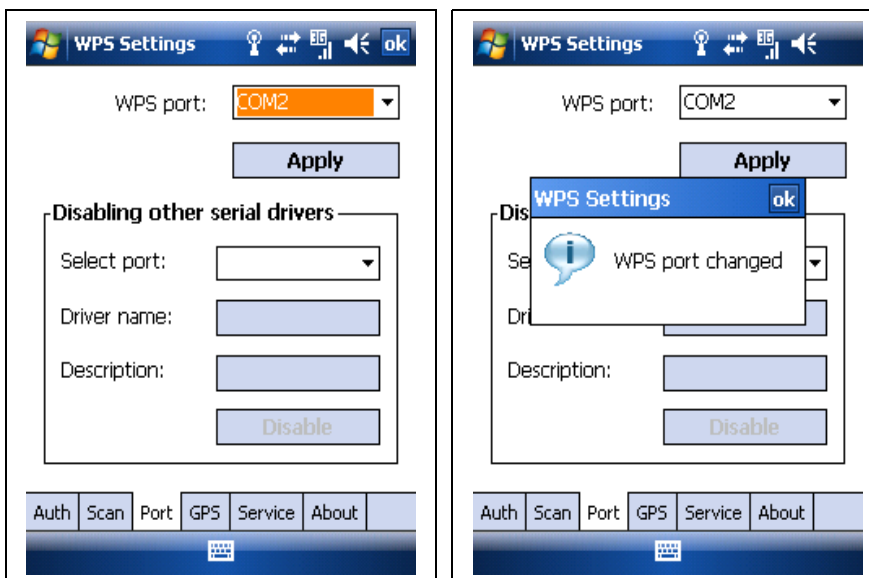
Temp folder: Select the folder on your Device or Storage Card where the application will store data files.

Temporary folder max size: Minimum recommended size is 1024 kb (1 MB).



9. Port - tab:

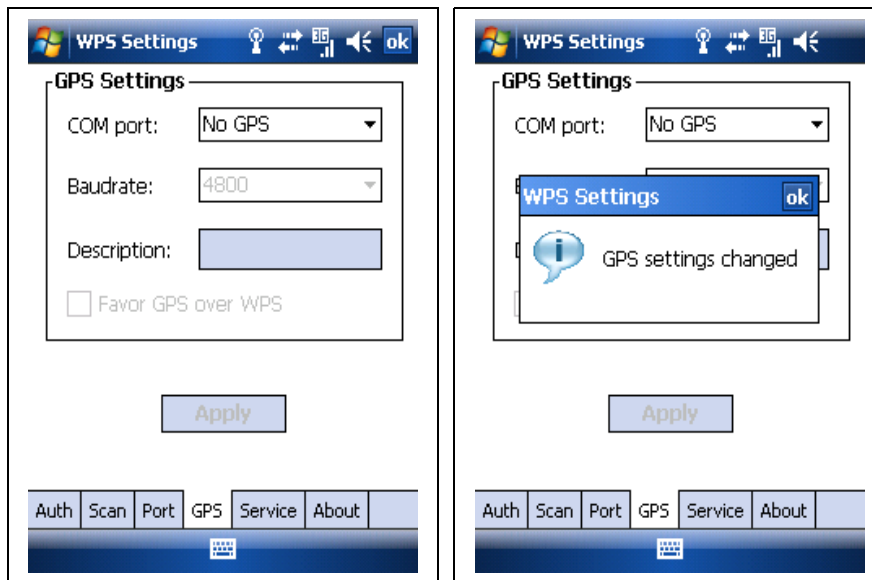
Select a free COM port that the WPS application will use as the Virtual GPS port (i.e. the port that an application requesting a location will monitor for a NMEA feed).



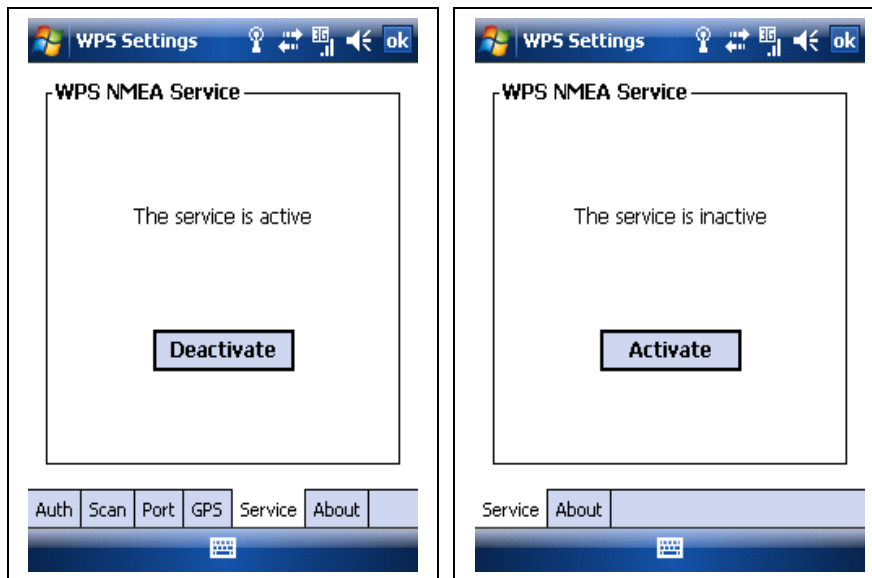
10. GPS - tab:

If the device doesn't have GPS (internal or external) or if you don't want to use GPS, then select "No GPS" and apply the settings.

See Step 15 for using both WPS and GPS for multimode hybrid positioning



11. Deactive and reactivate the service to ensure that all settings take effect



## Using WPS Virtual GPS with Other Application

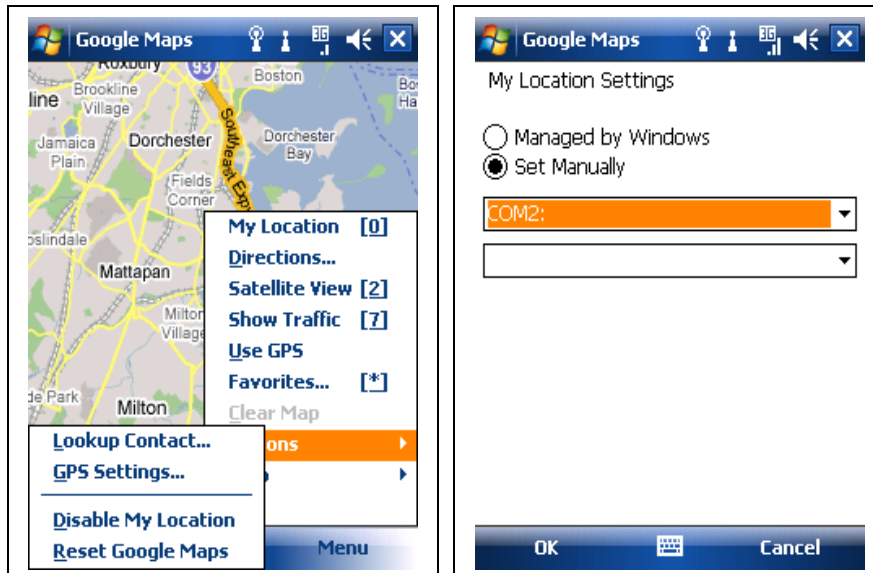
This example shows how other application can utilize Skyhook's Virtual GPS. The requirement for using Virtual GPS is that the application can read a GPS (NMEA) location stream through a COM port.

The example shows how to configure Google Maps, but same principles apply to any other application that can read GPS through COM port.

12. On the main screen of Google Maps first select "Menu" and then "Options"

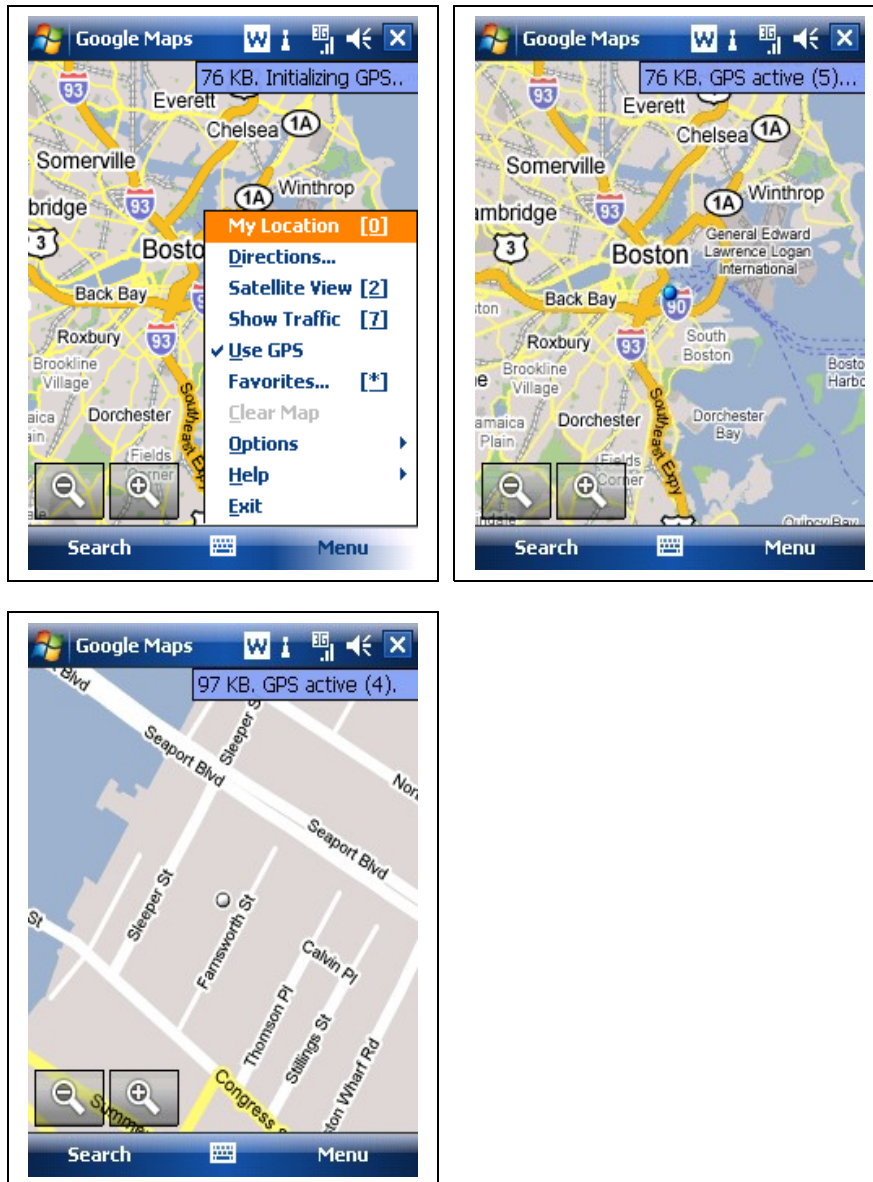


13. Under Options select "GPS Settings," then select the same COM port that was selected for WPS in step 9 above.



14. Select "Use GPS" under the menu and the map will show the location instantly (as long as the device is within Skyhook Wireless coverage area).

The "W" icon in the top tool bar indicates that WiFi location fix is being received from the Virtual GPS application. A "G" icon would indicate that a GPS location is being received from WPS.



## WPS / GPS Multimode Hybrid Positioning

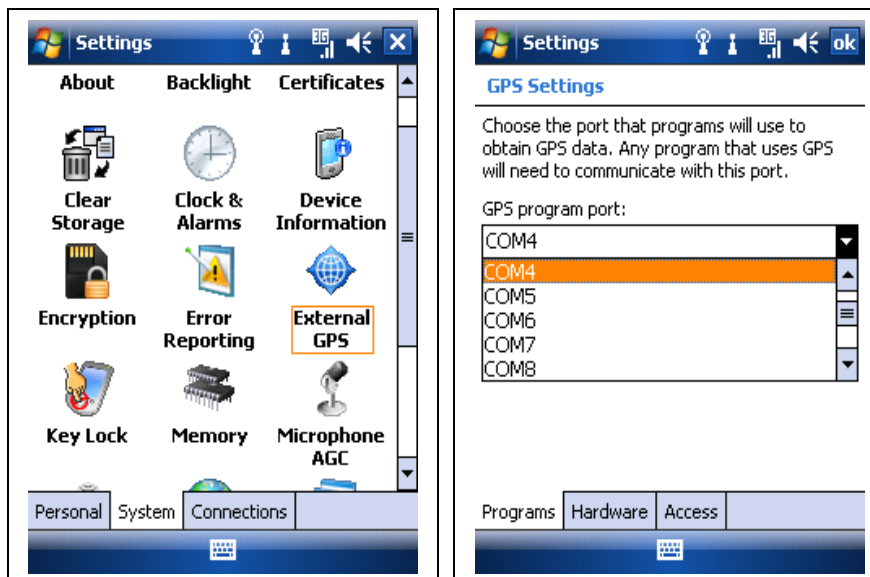
WPS Virtual GPS supports multimode hybrid positioning. Both WPS and GPS can be used for calculating the location. Depending on the availability/coverage of WPS and GPS one of the positioning methods is used to determine users location.

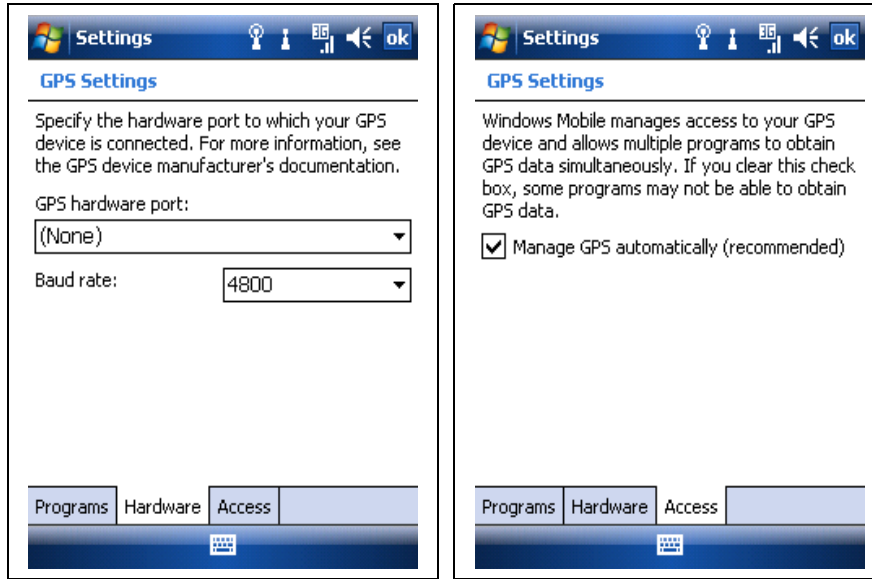
### 15. Defining Device GPS Settings

In the Settings panel, select External GPS. Select a free COM port as the “GPS Program Port.”

The “GPS Hardware Port” should not be assigned unless an external GPS is used.

In the Access - tab check the “Manage GPS Automatically” box.





16. GPS Settings within the WPS Virtual GPS Application

To use GPS/ WPS multimode positioning, the GPS setting in WPS application must match the device's GPS hardware port (step 15 above).

If "Favor GPS over WPS" is selected, GPS location is used whenever a GPS location is available. Otherwise, WPS will be used when available.

